

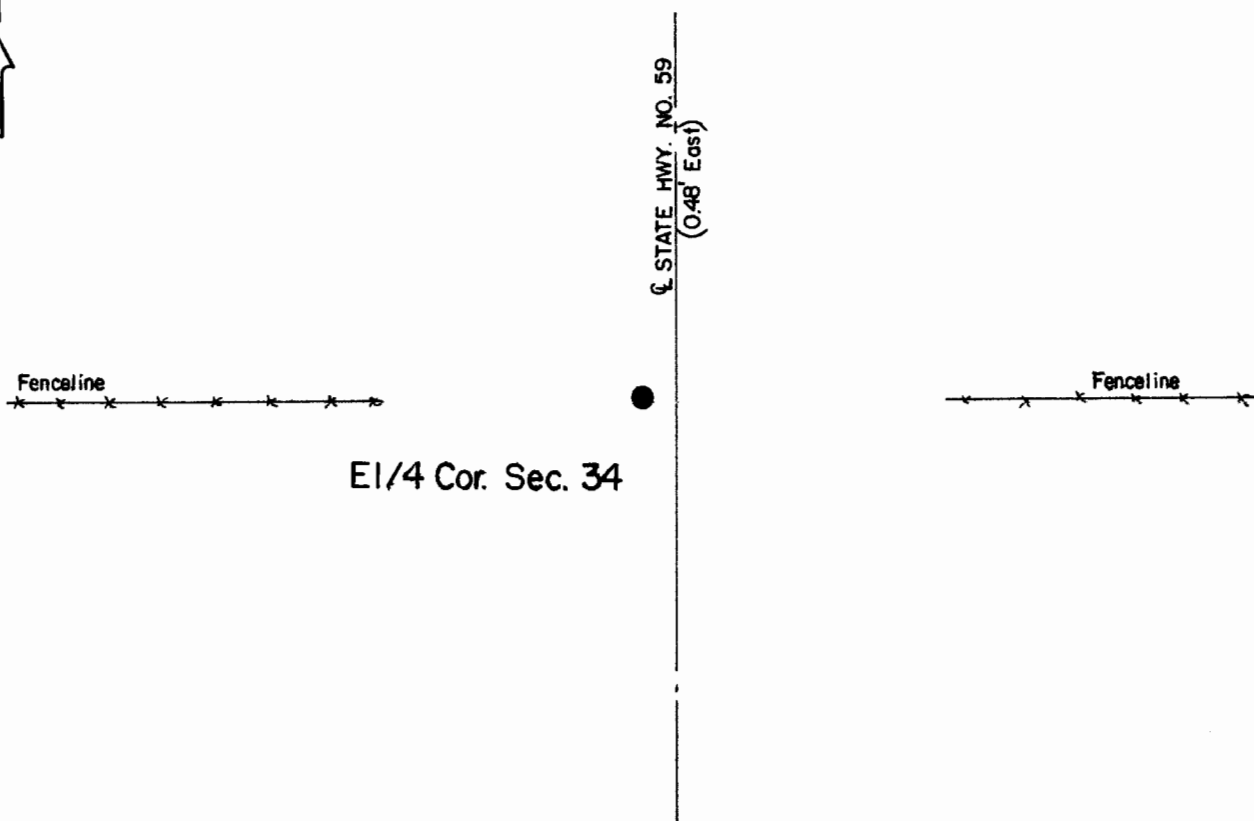
# CERTIFICATE OF LOCATION OF GOVERNMENT CORNER

**East Quarter** Corner of Section **34** , Township **108** , Range **41** 5th P.M.  
STATE OF MINNESOTA, County of Murray.

**Statement:** Aug. 30, 1989 - Found Brass Rod in old concrete pavement placed by the Minnesota Department of Highways in 1932.



## SKETCH OF REFERENCE TIES



Statement of evidence relative to this corner location is on the back of page.

I hereby certify that this document and the data contained herein was prepared by me or under my direct supervision and that I am a duly Registered Land Surveyor under the laws of the State of Minnesota.

Duane A. Bonnema

Nov 6, 1989

Date

Minnesota Registration No. 14895

OFFICE OF THE COUNTY RECORDER  
COUNTY OF MURRAY **NOV 15 1989**

I hereby certify that this document was filed in the County Recorder's office at \_\_\_\_ M. on the \_\_\_\_ day of \_\_\_\_\_ A.D., 19\_\_

County Recorder

By \_\_\_\_\_, Deputy

DOCUMENT NO. \_\_\_\_\_

**East Quarter Cor. Sec. 34 T108N-R41W**

**Statement:**

- August 1861 Original Government Land Office Surveyor L. G. M. Fletcher records in his field notes, "built mound with trench pits, charred stake, per instructions."*
- 1932 The Minnesota Highway Department records in their field notes that the "1/4 Corner" is 0.4 West of the Highway Centerline and they record "Brass Plug In place". The symbol shown here indicates that a stone was found at this location.*
- Aug. 30, 1989 Duane A. Bonnema, L.S. Reg. No. 14895, removed 4 inches of asphalt pavement and found a 3/4 inch brass rod which was drilled into the old concrete road surface by the Minnesota Department of Highways in 1932. The brass rod was 0.4 ft. west of the center line joint of the concrete pavement. The brass rod appears to be the best available evidence of the quarter corner position.*